

# Scotch Bonnet



**Scotch Bonnet**  
Condominiums



**A Luxury Development  
On the Southeast Peninsula  
Of St Kitts, W.I.**

## The Concept:

Begin with an exquisite piece of Caribbean Real Estate, elevate it to capture spectacular views and surround it on three sides by ocean. Add a prestigious Condominium Development with all the desired amenities, pepper it with lush landscaping and warm it year round. The end result: your recipe for a slice of paradise.

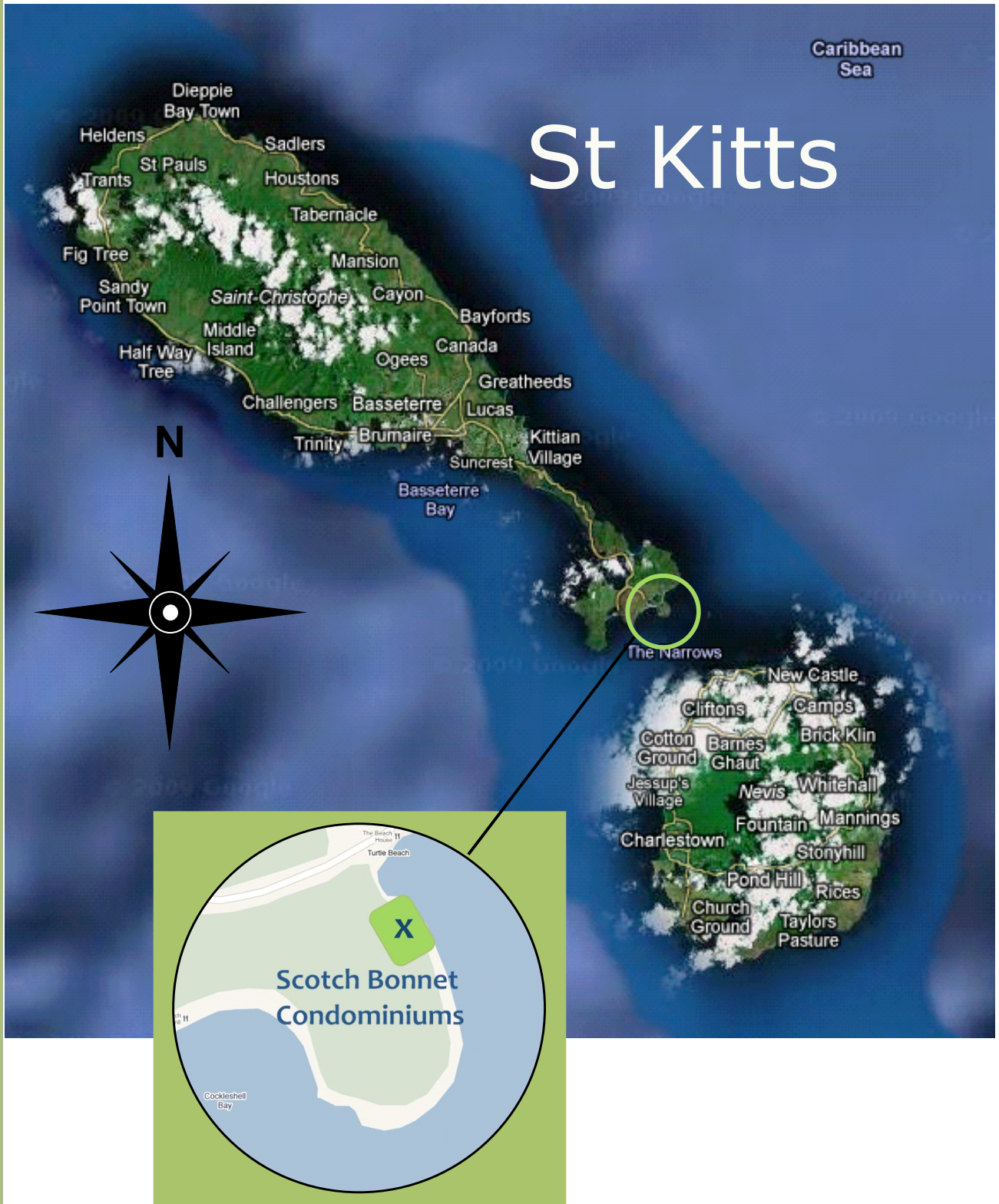
### Welcome to Scotch Bonnet Luxury Condominiums!



**\*The view looking into Turtle Bay from Building 2**



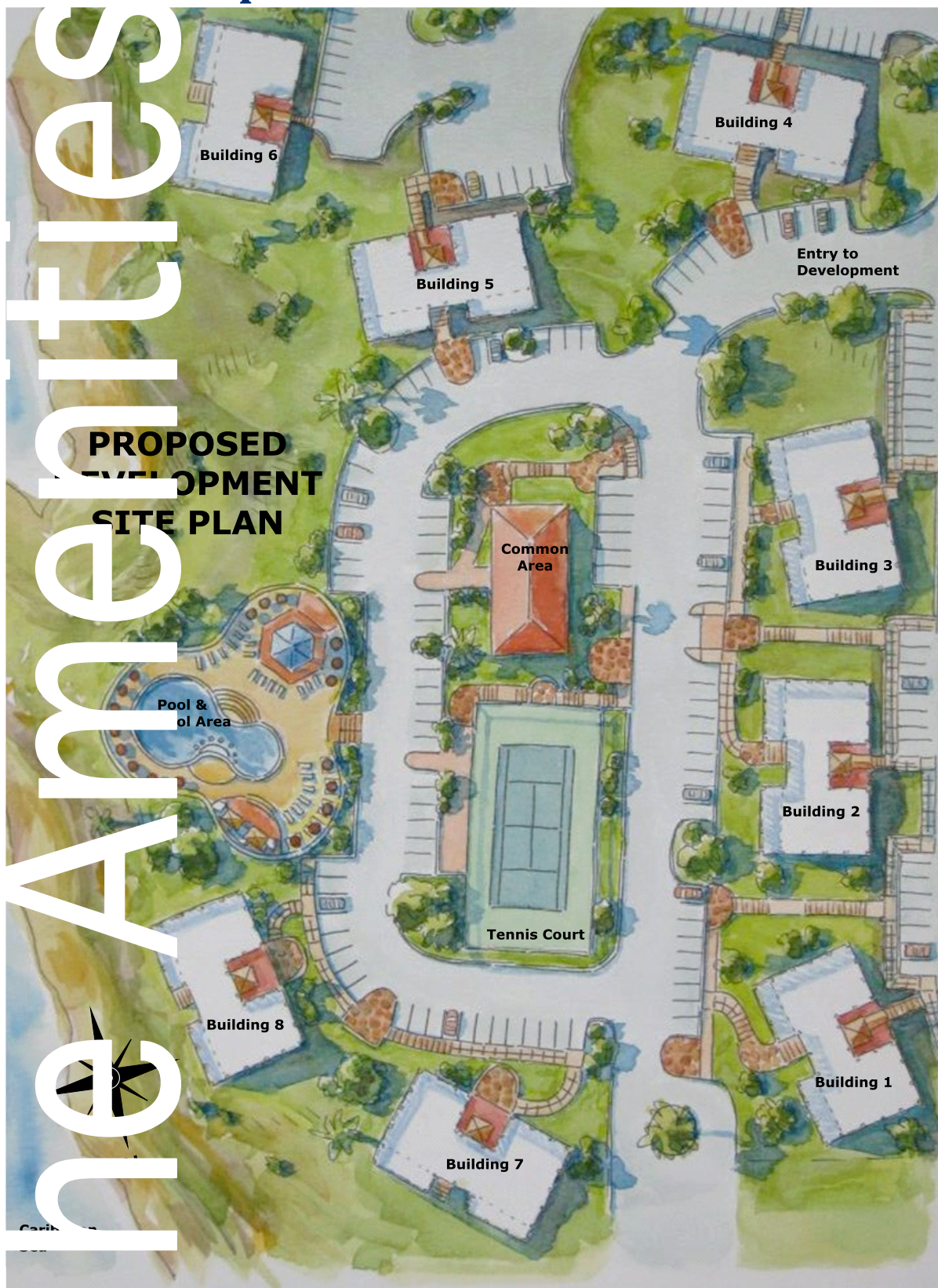
## The Location:



**Scotch Bonnet**  
Condominiums



## The Development:



Scotch Bonnet  
Condominiums

# The Development

## The Units and Amenities:

The planned Scotch Bonnet Condominium Development will consist of 8 buildings; with a total of 52 Units spread over seven acres of magnificent Cliffside property. All of the buildings are designed to face the ocean, positioned to take advantage of the most desirable views overlooking Mosquito Beach (Now known as Turtle Beach), the Caribbean Sea and Nevis. From your balcony, a constant gentle breeze will caress your face and the rhythmic sounds of lapping waves will soothe your ears; two aspects which make Caribbean living so desirable. And let's not forget about the year round warm weather!

The Condominium Development is offering fully furnished one, two and three bedroom Units. The kitchen appliances include: a dishwasher, oven, stovetop, refrigerator/freezer and microwave oven. Quality cabinetry is partnered with granite countertops throughout the kitchen. Each Unit is also equipped with stacked washing machine and dryer. All units contain a three piece guest washroom. The Master bedroom will accommodate a King sized bed with matching side tables and twin/queen beds with matching side tables in the guest bedroom. Cable TV hook-ups along with televisions are provided in all bedrooms and in the living room. Central air and ceiling fans are also included. And you will also appreciate wall-to-wall sliding glass doors that open onto spacious tiled verandas.

Purchasing a Condominium Unit at Scotch Bonnet Condominiums entitles the purchaser to apply for St. Kitts-Nevis Citizenship, as the Project is approved under the Citizenship by Investment Program with the Government of St Kitts and Nevis.

## The Pricing:

Suite 1101 First Floor Approx. 775 sq ft **SOLD**

Suite 1102 First Floor Approx. 775 sq ft **SOLD**

Suite 1103 First Floor Approx. 975 sq ft

Suite 1104 First Floor Approx. 775 sq ft

Suite 1201 Second Floor Approx. 1836 sq ft

Suite 1202 Second Floor Approx. 1836 sq ft

Suite 1301 Third Floor Approx. 1836 sq ft **SOLD**

Suite 1302 Third Floor Approx. 1836 sq ft

Suite 1401 Fourth Floor Approx. 1836\* sq ft

\* (Plus an additional 1836 sq ft of Private Terrace)

Suite 1402 Fourth Floor Approx. 1836\* sq ft

\* (Plus an additional 1836 sq ft of Private Terrace)

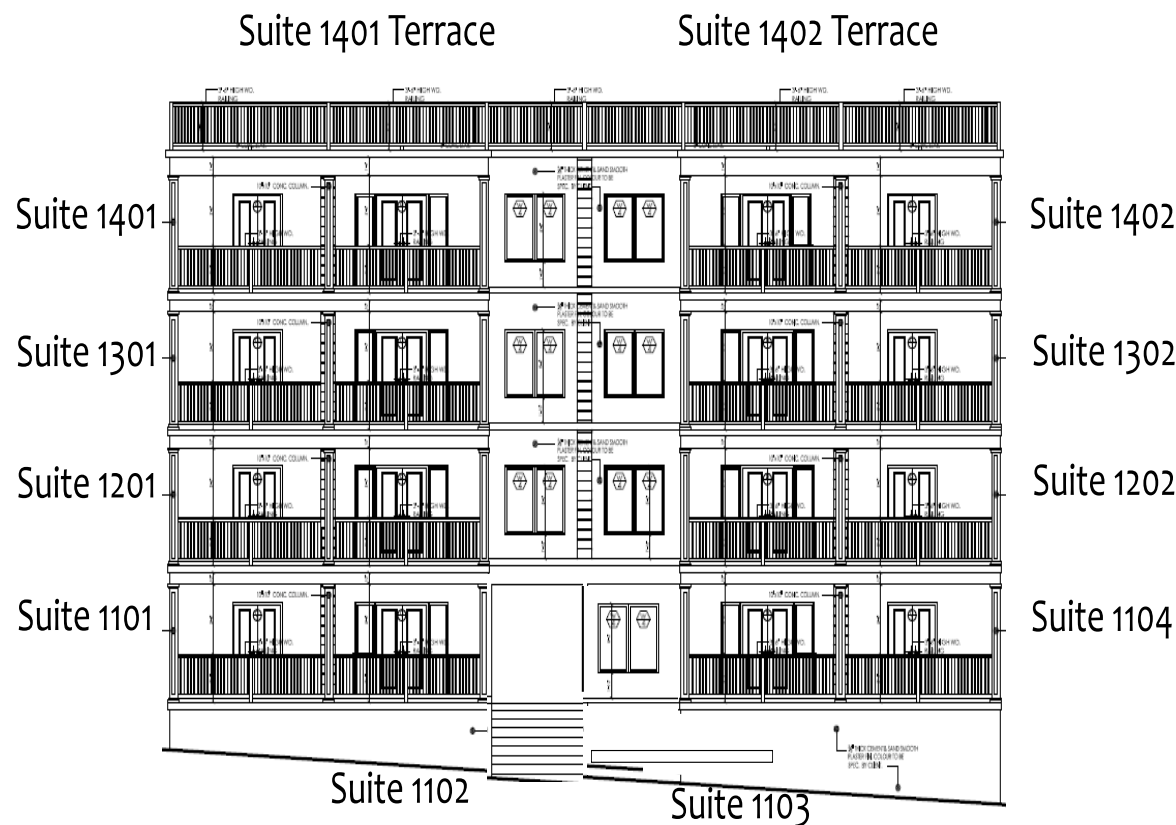
### Notes:

- 1) All Prices in US Dollars
- 2) Furniture Packages available
- 3) Project approved for St Kitts-Nevis  
Citizenship by Investment program

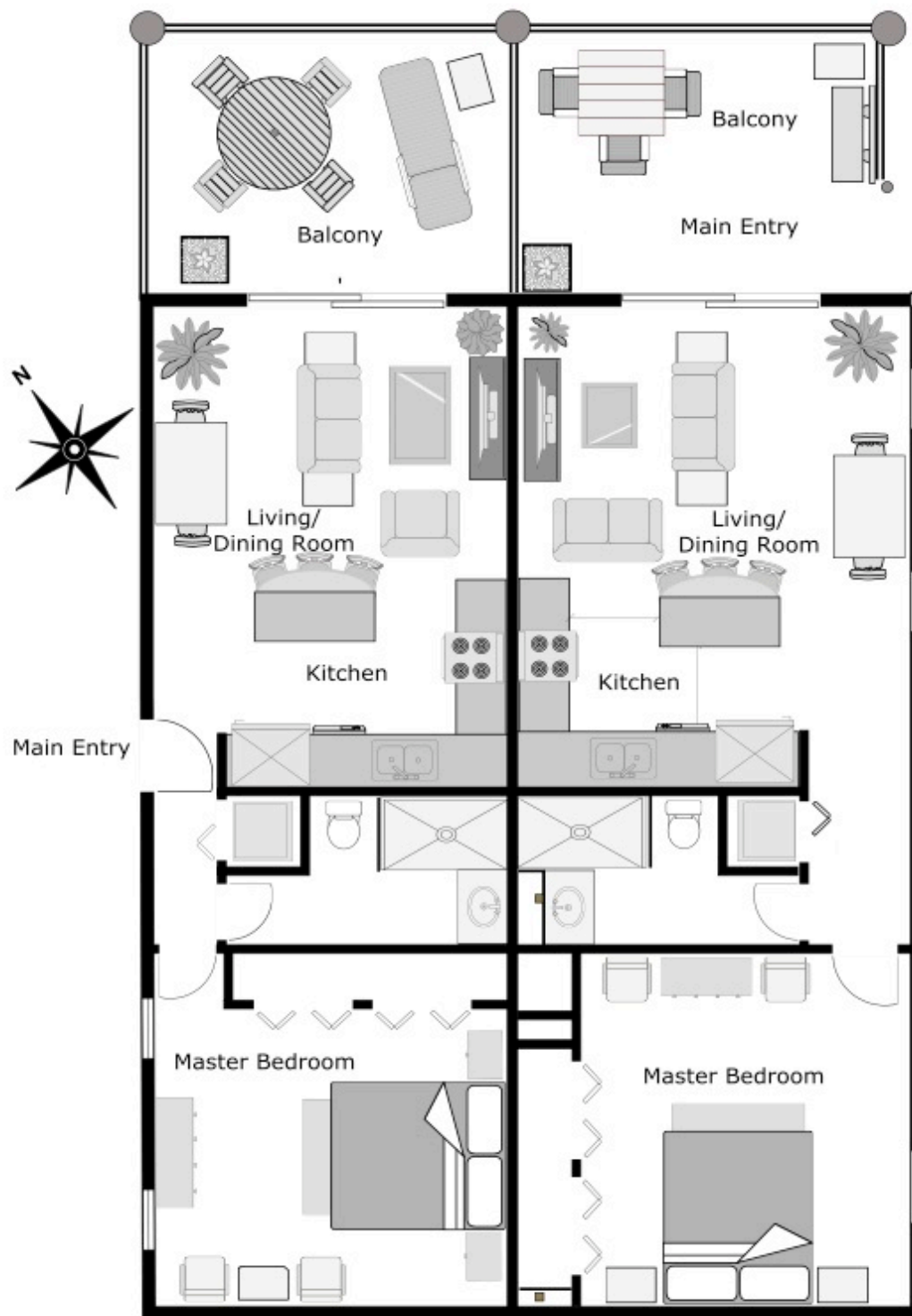


## The Suite Layout:

### Building 1



## SCOTCH BONNET CONDOMINIUMS East Elevation

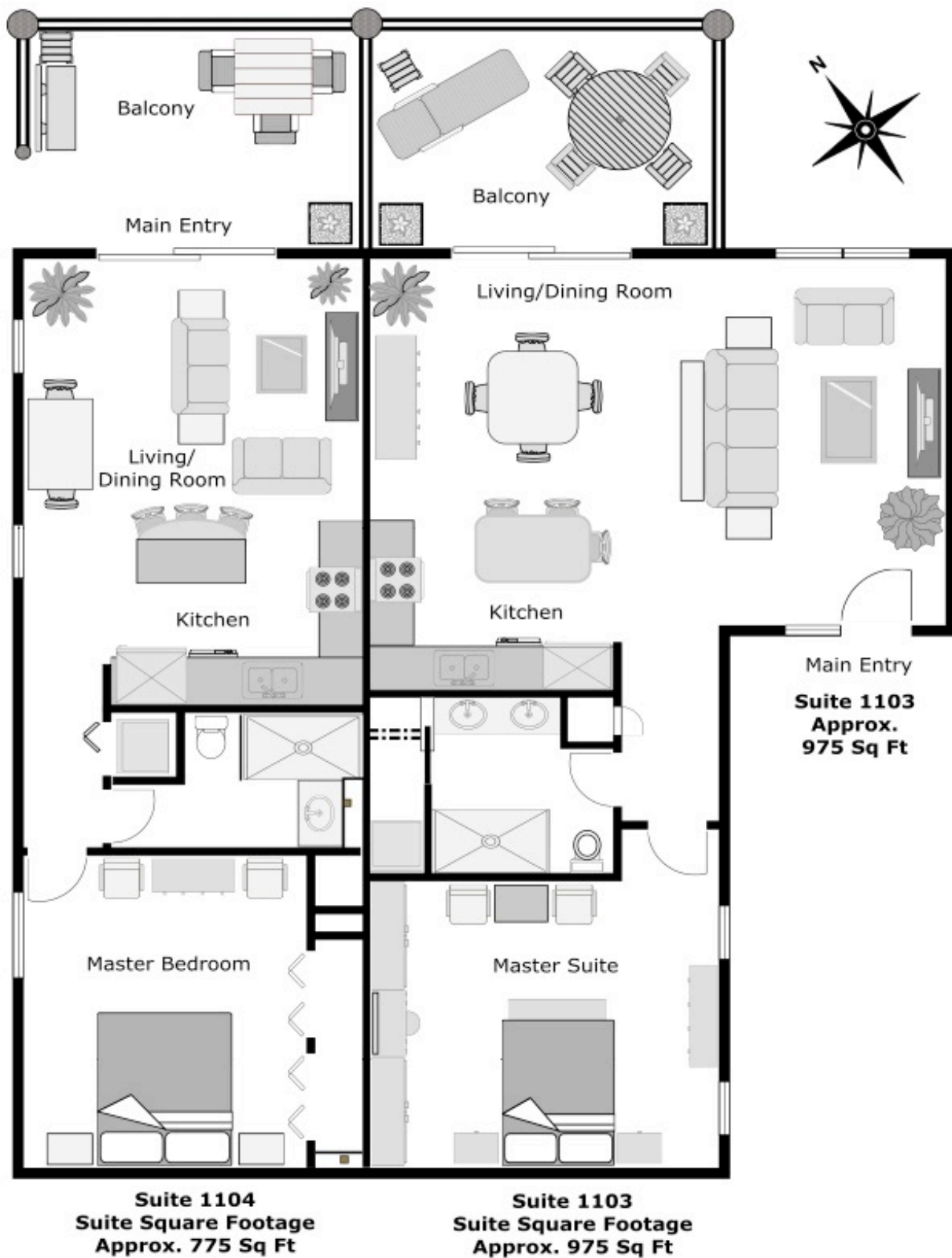


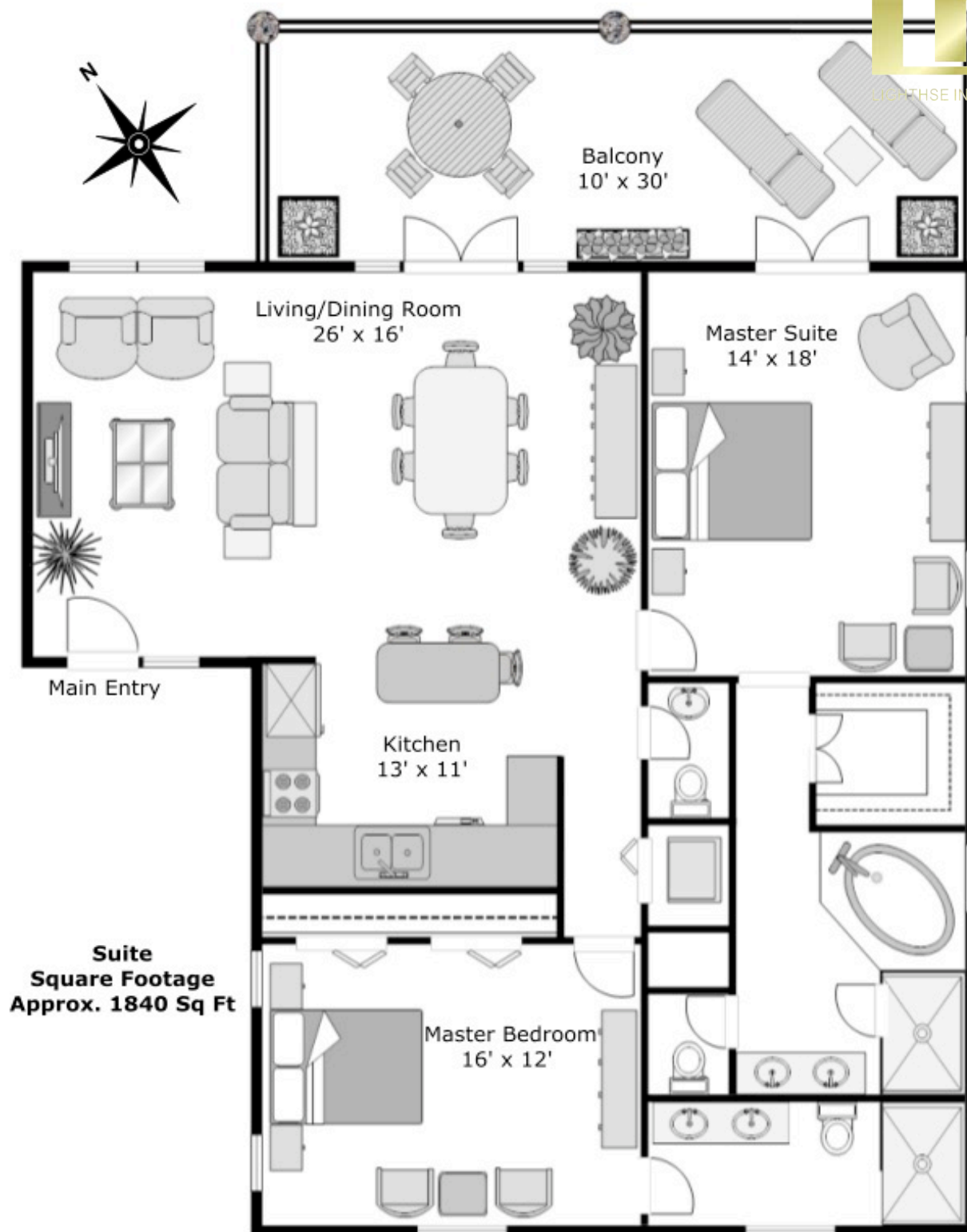
**SUITE 1102**  
**Suite Square Footage**  
**Approx. 775 Sq Ft**

**SUITE 1101**  
**Suite Square Footage**  
**Approx. 775 Sq Ft**

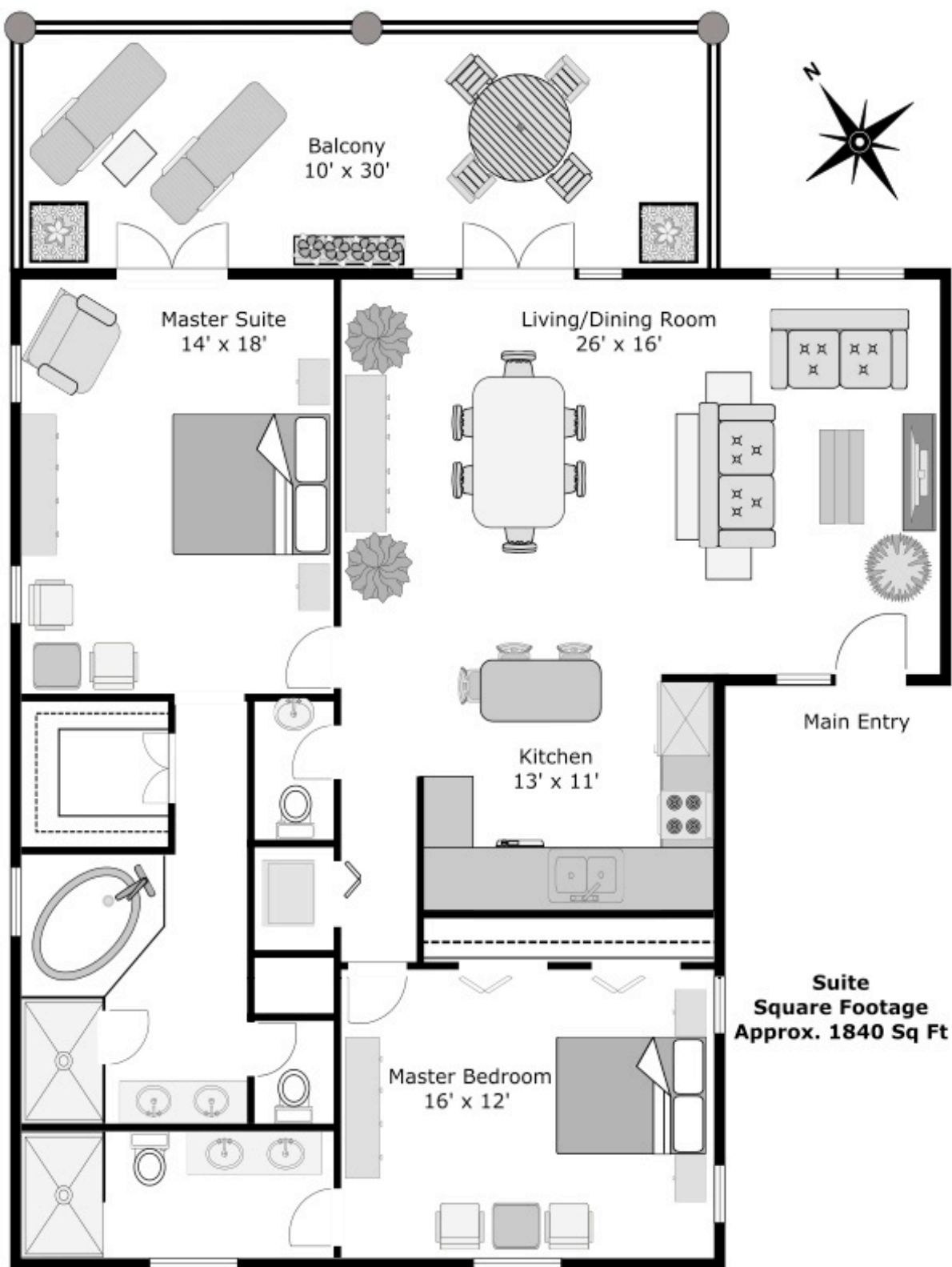
## Building 1 - Suite 1101 - 1102





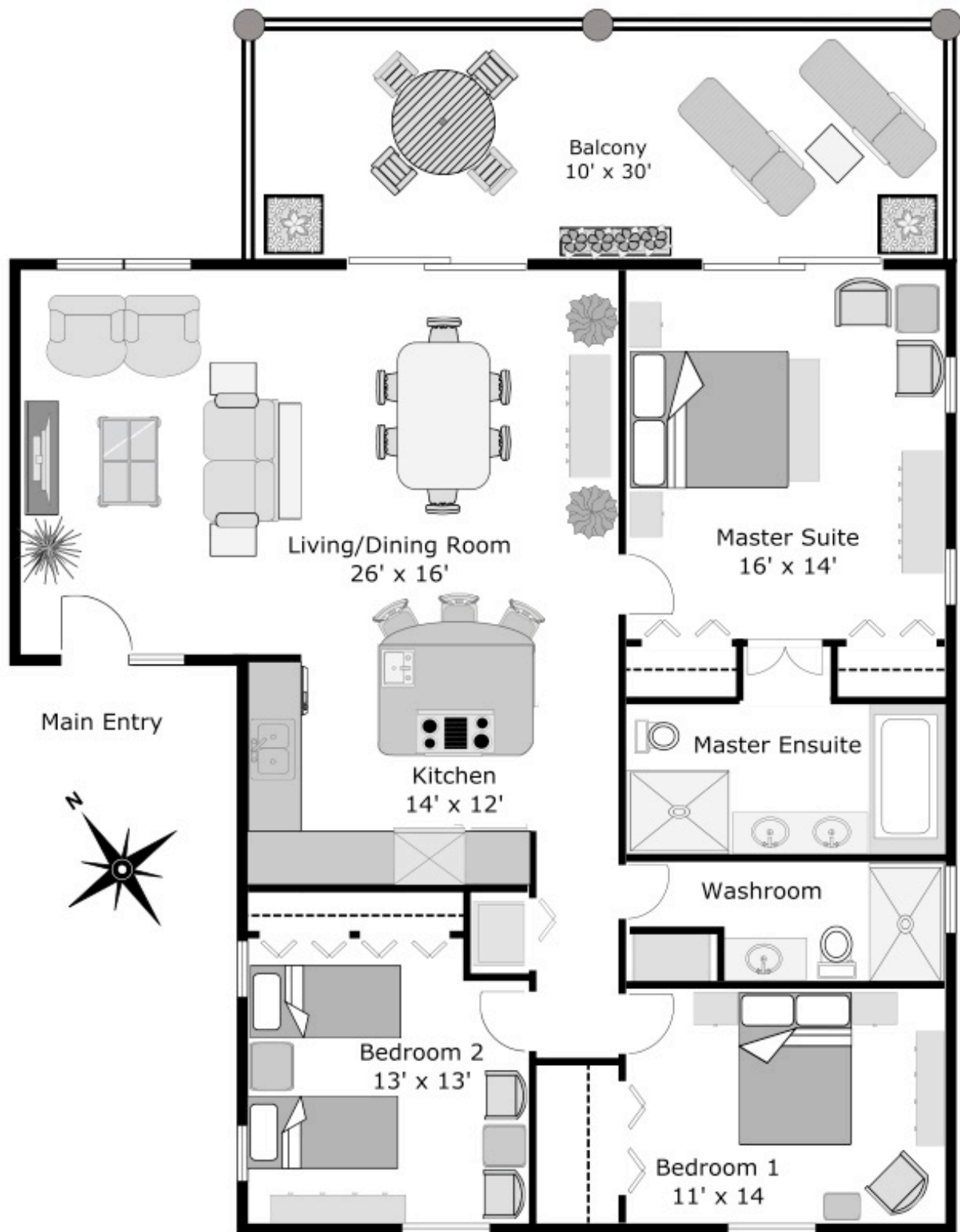


Building 1 - Suite 1201, 1401-optional

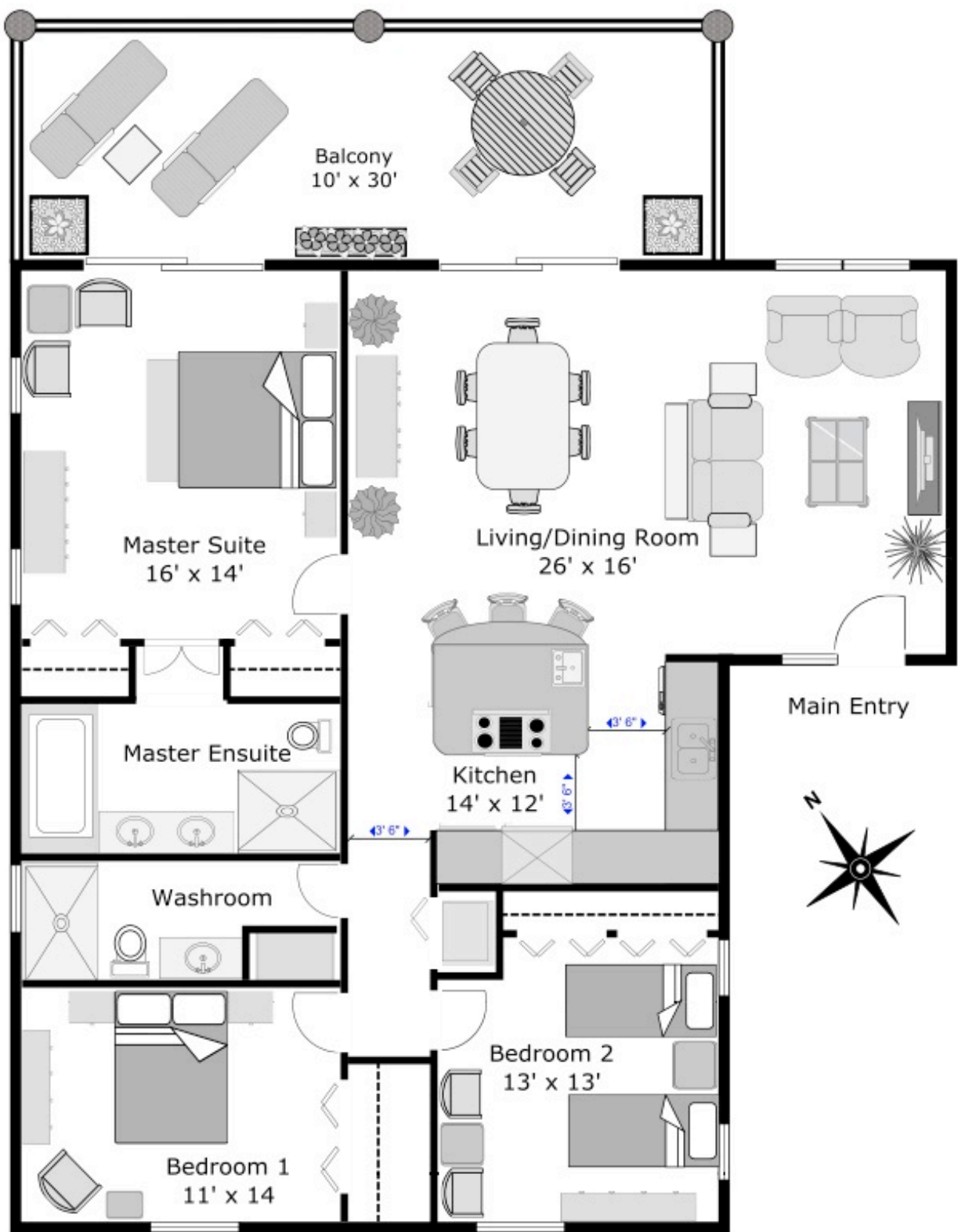


Building 1 - Suite 1202, 1402-optional

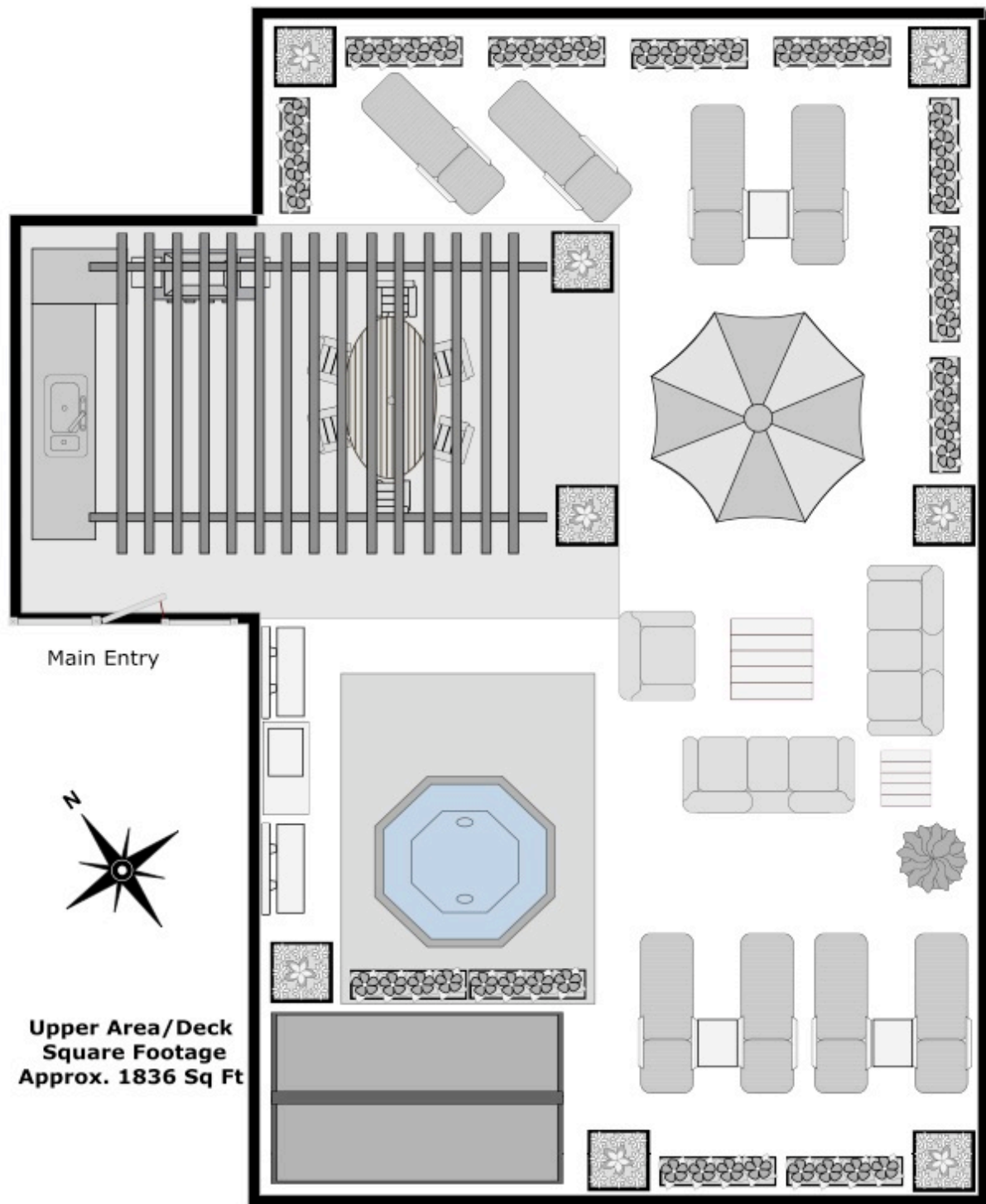




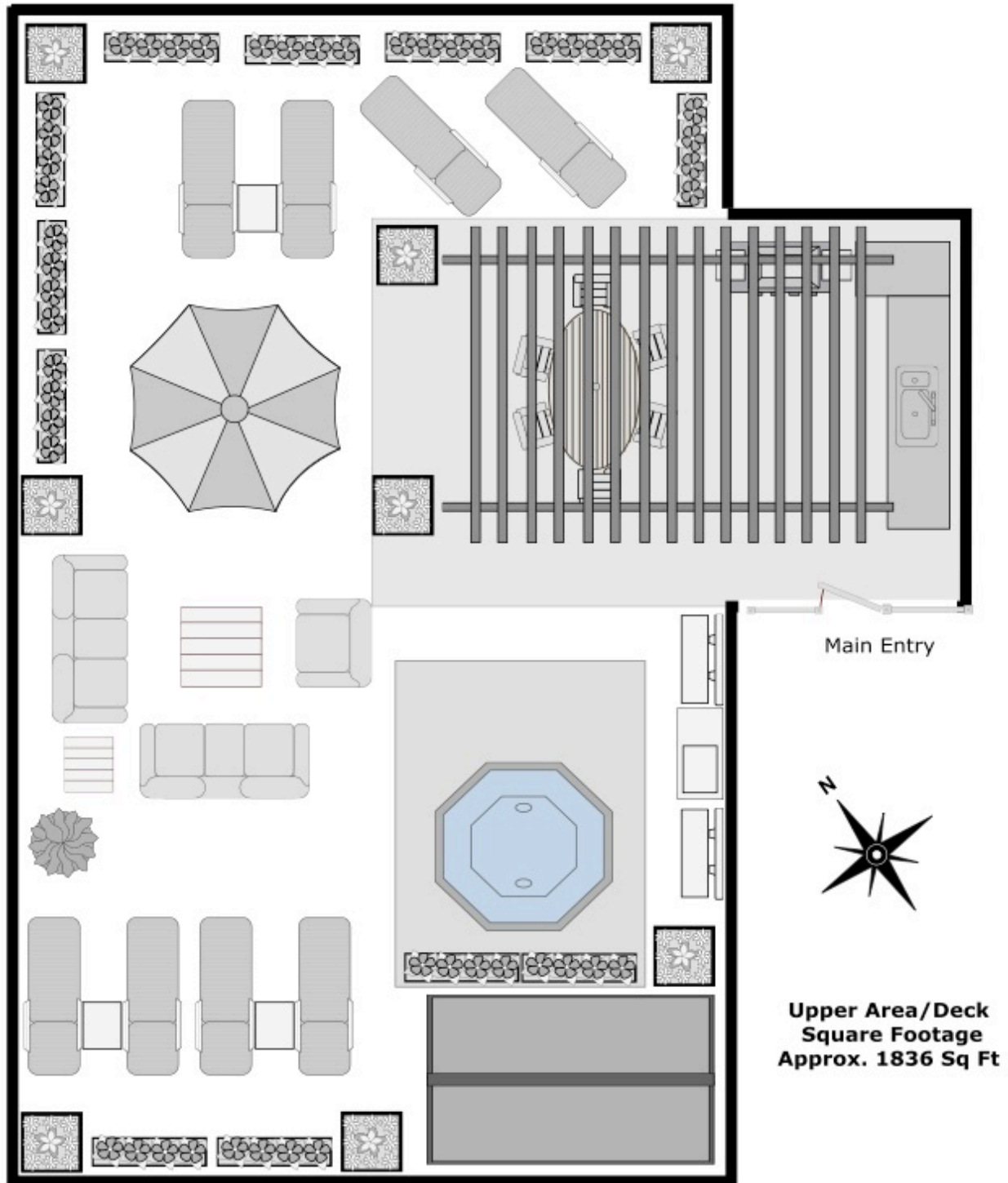
Building 1 - Suite 1301, 1401-optional



Building 1 - Suite 1302, 1402-optional







Rooftop Terrace Area  
Building 1 - Suite 1402

## Different Views of the Development:



**View from the balcony of  
building 1, Suite 1101  
Looking North and  
Towards Turtle Beach.**

**View of Building 1 –  
Under Construction**



# Breathtaking



**(top) View from Turtle Beach Development looking south towards Scotch Bonnet and the sister island of Nevis.**

**(bottom) View from any of the verandahs of building 1.**